



Napino

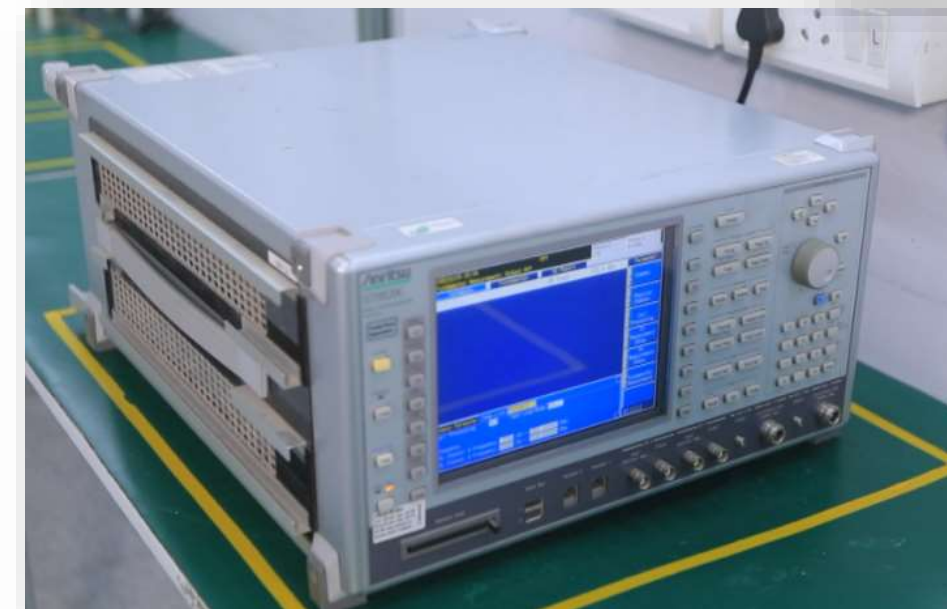
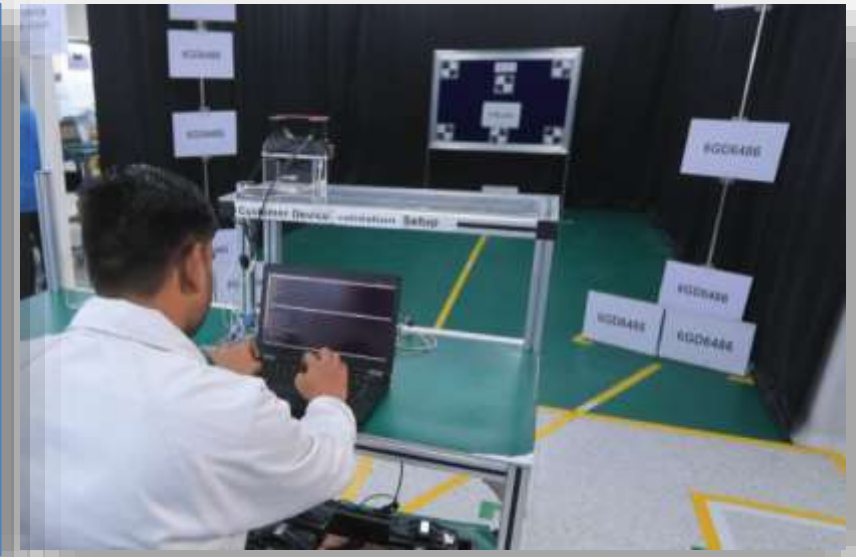
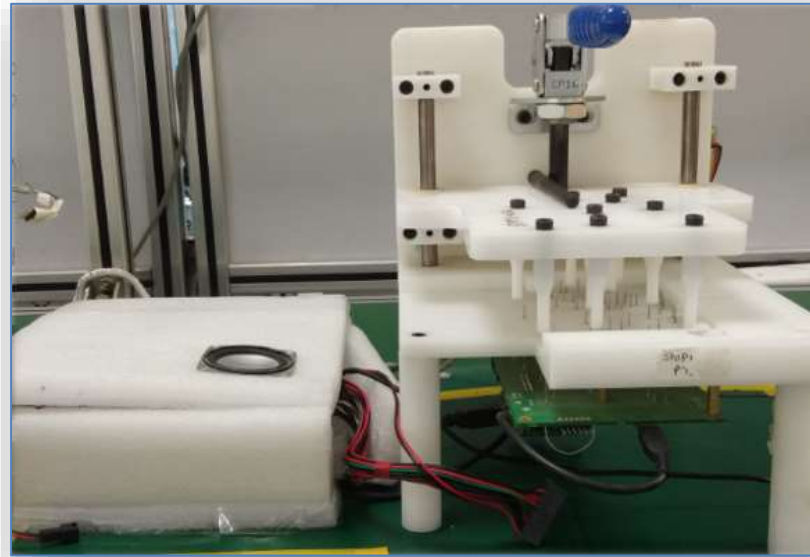
Salient Features:

1. 30,000 sq. ft. facility & 5 assembly lines
2. Clean room
3. Dedicated GPS
4. Ultrasonic Welding Machine
5. Laser Etching Machine
6. GSM repeater
7. Authorized accesses to server rooms & store
8. Complete CCTV surveillance



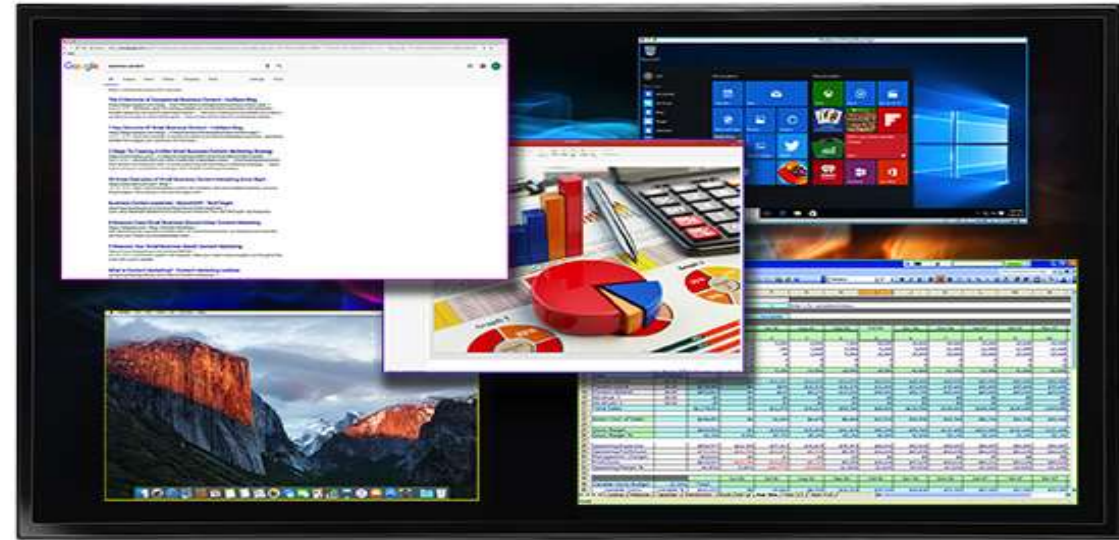
Salient Features:

1. Digital Call Box
2. Analog Call Box
3. Air Showers
4. ESD checker system
5. 100x Microscope
6. Profile Tuning Suite
7. ESD protected production floors
8. Dark Room for camera lens calibration



Features:

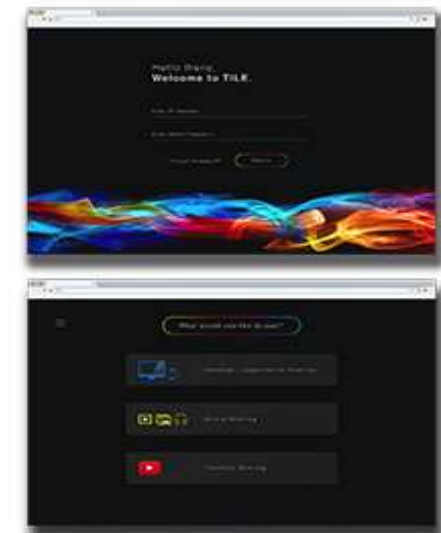
1. Cast up to four 1080p video streams simultaneously
2. Moderator Mode – management and control of content by admin
3. Universal Compatibility – iOS, Android and Windows
4. Customize the casting TILE with alpha blending
5. Simple Setup – Install, Connect, Present
6. Internal Access Point – when a network is unavailable or locked out
7. Full audio control of all tiles through the TILE application
8. Network Connection – Ethernet, WiFi and Access Point



iOS/Android APP



MAC/PC APP



Features:

1. High level fleet metrics
2. Fleet based customizable alerts on performance
3. Cloud based storage for live feed to host
4. Variants of 64 GB and 128 GB internal storage
5. Four cameras with infinity focus
6. Side cameras for surroundings enable drivers to make informed decisions thus bettering drivability
7. External view identifies factors that can eliminate risky driving such as speed, g-force, turn/stop/U-turn signal violations etc.
8. Internal view provides real time, actionable information on driver's distraction/behavior or policy violation



Features:

1. IP based surveillance camera
2. 4 hour battery backup
3. Two way communication & memory backup on cloud
4. Live feed and video recording in 480p and 720p
5. 2 round 1.2" LCD screen
6. Speaker & microphone
7. WiFi Module
8. Orientation sensor
9. Two way mirror camera
10. Motion Sensors
11. Adhesive magnets required for mounting



Features:

1. Compatible with both android and iOS devices
2. MicroSD card slot as well as cloud storage for easy live feeds
3. Easy power-up and installation with a phone speaking application
4. 2.8" touch-screen display
5. Smart indoor security Infrared camera
6. Built-in Amazon Alexa
7. 2 Micro-phones and far-field speakers
8. Weather, time and location alerts
9. Powered by Android version 7.1
10. Home automation powered by zigbee version 4.8
11. Zone, trigger for burglar/motion detection and notification on
12. Baby crying detection for 2 years and below
13. High and low quality video/photo quality features
14. Facial Recognition removes unnecessary alerts
15. Supports Bluetooth version 4.2
16. Music can be played through various apps routed through Alexa



Our Product Range

Security Cameras/ Doorbells



Smart doorbell LTE camera Home Surveillance Camera Industrial Camera Wi-Fi/Video Doorbell

Gateways/ Access Points



Home Automation Gateway Smart Energy Gateway IoT Gateway Smart Wireless AP Wireless AP and CPE Wireless Media Streaming Device

Smart Trackers



GPS Commercial Tracker 3G GPS Tracker GPS Industrial Tracker Personal Tracker Asset Tracker Vehicle Tracker

Smart Consumers



BT Intrusion Sensor IoT Beacon Water Leak Sensor Smart Plug Smart Bulb Smart Watch Smartphone Projector

Thank You